



Year 2- Self- Portraits

Big question:

What is shading? How can we use shading to improve our portraits?

Key Concept:

Shading can add realism to our portraits

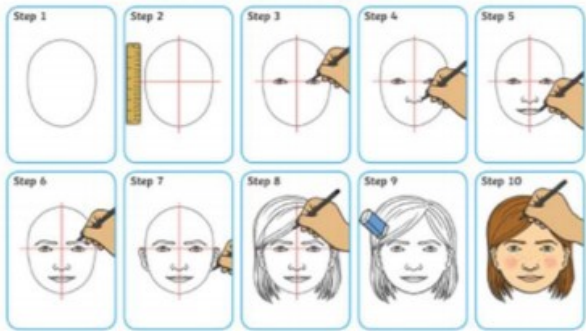
Key skills

Use pencils to create marks and lines, with increasing control over density

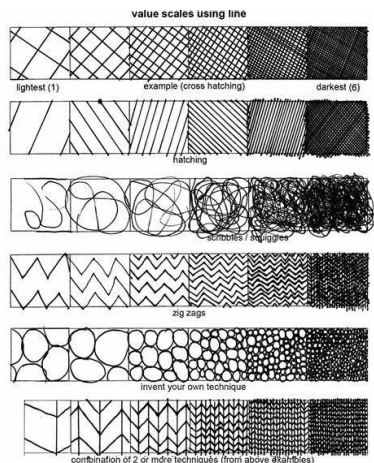
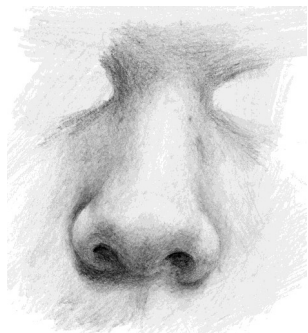
Use key phrases to talk about and be able to compare art works

Understand
Key

How to Draw a Self-Portrait



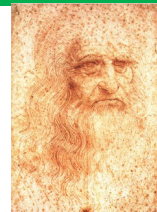
Use in a variety of ways



Key Vocabulary Definition

portrait	A piece of artwork showing a person.
self-portrait	A portrait that the artist creates of themselves.
2-dimensional	A shape is flat
3-dimensional	A form has depth
proportion	The size and position of parts of the whole image in relation to one another.
Medium / media	Materials we use in Art e.g. paint and pastels
shading	Drawing darker pencil marks to show darker tones.
tones	The lightness and darkness of something.
realistic	Being like the actual object.

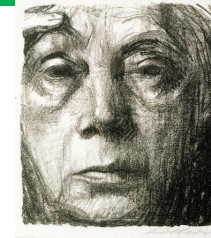
Artists' work we looked at...



Self-portrait?
C.1512
Leonardo da Vinci
Movement: Renaissance
Da Vinci drew people in his community and included them in his paintings.



Self-portrait
1630
Rembrandt
Movement: Dutch Golden Age
Rembrandt sometimes added himself into his paintings as an extra figure!



Self-portrait
1934
Kathe Kollwitz
Movement: Expressionism
Showed the lives of poor people and those affected by War.



A set of 6 self-portraits
1967
Andy Warhol
Movement: Pop Art
Warhol enjoyed 'POPular' objects and celebrity culture. He used them in his work.