



Year 6—Sculpture: The Human Form

Big question: Can we show depth on a flat surface?

Key Concept: There are techniques we can use to make our drawings have depth.

Key skills

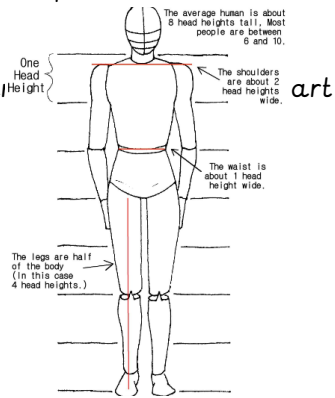
Use pencils and other media to create marks and lines.

Use modelling materials to create human forms in the style of an artist.

Draw accurate representations of sculptures from the



Perspective (depth)



Proportion

Key Vocabulary Definition

Sculpture	A piece of artwork that is 3-Dimensional.
Figurative	Based on something that you can recognise from life.
Abstract Art	Art that does not represent anything based on reality (but may have a meaning or bring about an emotional response).
Proportion	The size and position of parts of the whole image in relation to one another.
Line	A mark used to define the contours of a shape.
Shading	Drawing darker pencil marks to show darker tones.
Tones	The lightness and darkness of something.
Composition	Where objects are placed.

Artists' work we looked at...

Antony Gormley Born 1950	Alberto Giacometti	John Davies Born 1946	John Davies Born 1946	Henry Moore 1898—1986	Henry Moore 1898—1986

FORMAL ELEMENTS

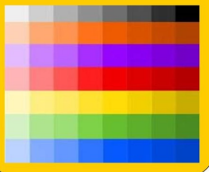
LINE

A **Line** is the path left by a moving point, e.g. a pencil or a brush dipped in paint. A **Line** can take many forms, e.g. horizontal, diagonal or curved. A **Line** can be used to show Contours, Movements, Feelings and Expressions.



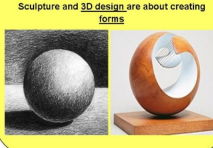
TOPE

Tone means the lightness or darkness of something. This could be a shade or how dark or light a colour appears.



SHAPE & FORM

A **shape** is an area enclosed by a **line**. It could be just an outline or it could be **shaded** in. **Form** is a **three dimensional shape** such as a sphere, cube or a cone. Sculpture and 3D design are about creating **forms**.

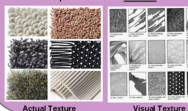


TEXTURE

Texture is the surface quality of something, the way something feels or looks like it feels. There are two types of texture: **Actual Texture** and **Visual Texture**.

Actual Texture—really exists so you can feel it or touch it

Visual Texture—created using different marks to represent actual texture.



COLOUR

There are 3 **Primary Colours**: **RED, YELLOW** and **BLUE**.

By mixing any two **Primary Colours** together we get a **Secondary Colour**: **ORANGE, GREEN** and **PURPLE**.



PATTERN

A **pattern** is a design that is created by repeating **lines, shapes, tones** or **colours**.

Patterns can be **manmade**, like a design on fabric, or **natural**, such as the markings on animal fur.

