



Year 1– Self– Portraits

Big question: How can we draw a face more accurately?

Key Concept: There are techniques we can use to make our drawings more realistic.

Key skills

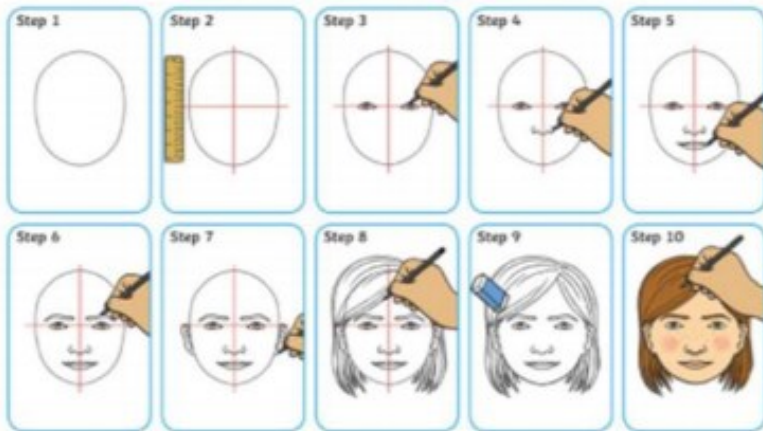
Use pencils to create marks and lines

Use key phrases to talk about and be able to compare art works

Draw accurately shaped portraits and self-portraits

Know key facts about 5 key artists

How to Draw a Self-Portrait



FORMAL ELEMENTS

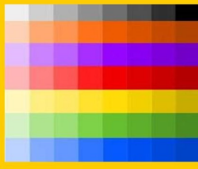
LINE

A **Line** is the path left by a moving point, e.g. a pencil or a brush dipped in paint. A **Line** can take many **forms**, e.g. horizontal, diagonal or curved. A **Line** can be used to show **Contours**, **Movements**, **Feelings** and **Expressions**.



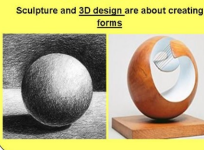
TONE

Tone means the lightness or darkness of something. This could be a **shade** or how **dark** or **light** a **colour** appears.



SHAPE & FORM

A **shape** is an area enclosed by a **line**. It could be just an outline or it could be **shaded** in. **Form** is a **three dimensional shape** such as a sphere, cube or a cone.



TEXTURE

Texture is the surface quality of something, the way something feels or looks like it feels. There are two types of texture: **Actual Texture** and **Visual Texture**.

Actual Texture really exists so you can feel it or touch it.



COLOUR

There are 3 **Primary Colours**: **RED**, **YELLOW** and **BLUE**. By mixing any two **Primary Colours** together we get a **Secondary Colour**: **ORANGE**, **GREEN** and **PURPLE**.



PATTERN

A **pattern** is a design that is created by repeating **lines**, **shapes**, **tones** or **colours**. Patterns can be **manmade**, like a design on fabric, or **natural**, such as the markings on animal fur.



Key Vocabulary

Definition

portrait	A piece of artwork showing a person.
self-portrait	A portrait that the artist creates of themselves.
facial features	eyes, nose, mouth, lips, eyebrows, freckles etc
proportion	The size and position of parts of the whole image in relation to one another.
line	A mark used to define the contours of a shape.
shading	Drawing darker pencil marks to show darker tones.
tones	The lightness and darkness of something.
realistic	Being like the actual object.

Artists' work we looked at...



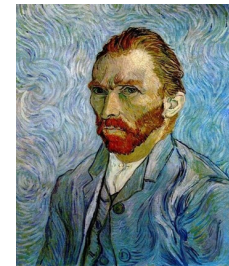
Man in a red turban

1433

Jan van Eyck

Movement: Renaissance

This painting is believed to be one of the first self portraits.



Self-portrait
1889

Vincent van Gogh

Movement: Expressionism

Van Gogh tried to show feelings in his art work



Self-portrait with thorn necklace and hummingbird
1940

Frida Kahlo

Movement: Surrealism / Symbolism

Kahlo created 55 self-portraits



Julian
2013

Julian Opie

Movement: Pop Art / Minimalism

Created Blur's Album cover in 2000