



Key skills

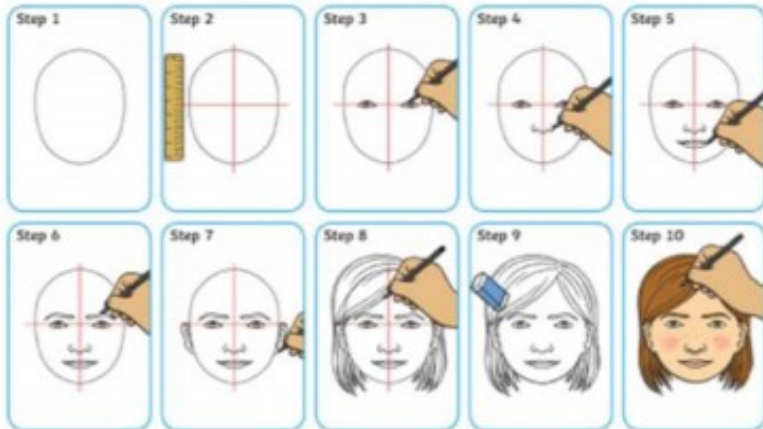
Use pencils to create marks and lines

Use key phrases to talk about and be able to compare artworks

Draw accurately shaped portraits and self-portraits

How to Draw a Self-Portrait

K



FORMAL ELEMENTS

LINE

A **line** is the path left by a moving point, e.g. a pencil or a brush dipped in paint. A **line** can take many **forms**, e.g. horizontal, diagonal or curved. A **line** can be used to show **Contours**, **Movements**, **Feelings and Expressions**.

TONE

Tone means the lightness or darkness of something. This could be a **shade** or how **dark** or **light** a **colour** appears.

SHAPE & FORM

A **shape** is an area enclosed by a **line**. It could be just an **outline** or it could be **shaded** in.

Form is a **three dimensional shape** such as a sphere, cube or a cone.

Sculpture and **3D design** are about creating **forms**.

TEXTURE

Texture is the surface quality of something, the way something feels or looks like it feels. There are two types of texture: **Actual Texture** and **Visual Texture**.

Actual Texture - really exists so you can feel it or touch it

Visual Texture - created using different marks to represent actual texture.

COLOUR

There are 3 **Primary Colours**: **RED**, **YELLOW** and **BLUE**.

By mixing any two **Primary Colours** together we get a **Secondary Colour**: **ORANGE**, **GREEN** and **PURPLE**.

PATTERN

A **pattern** is a design that is created by repeating **lines**, **shapes**, **tones** or **colours**.

Patterns can be **manmade**, like a **design** on fabric, or **natural**, such as the markings on animal fur.

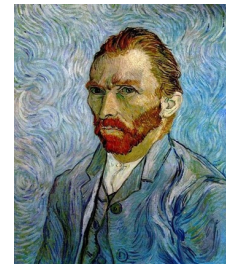
Key Vocabulary Definition

portrait	A piece of artwork showing a person.
self-portrait	A portrait that the artist creates of themselves.
facial features	eyes, nose, mouth, lips, eyebrows, freckles etc
proportion	The size and position of parts of the whole image in relation to one another.
line	A mark used to define the contours of a shape.
shading	Drawing darker pencil marks to show darker tones.
tones	The lightness and darkness of something.
realistic	Being like the actual object.

Artists' work we looked at...



Man in a red turban
1433
Jan van Eyck
Movement: Renaissance
This painting is believed to be one of the first self-portraits.



Self-portrait
1889
Vincent van Gogh
Movement: Expressionism
Van Gogh tried to show feelings in his art work



Self-portrait with thorn necklace and hummingbird
1940
Frida Kahlo
Movement: Surrealism / Symbolism
Kahlo created 55 self-



Untitled
2004
Cindy Sherman
Movement: Conceptual Art
Sherman is an American photographer



Julian
2013
Julian Opie
Movement: Pop Art / Minimalism
Created Blur's Album cover in 2000