



Ashleigh Primary School and Nursery

office@ashleigh.norfolk.sch.uk
nursery@ashleighprimary.net
treehouse@ashleighprimary.net

24th October 2024

- **Message from Mr. McConnell**
- **Golden Ticket Winners**
- **Christmas Fair Scam Alert**
- **School Lunches Update**
- **Achievement Board**
- **Ashleigh Friends**
- **Flu Vaccination**
- **Reception & Y6 Height & Weight**
- **PE Days**
- **Free School Meal Info**
- **Diary Dates 2024-2025**
- **Community Events**
- **Term Dates 2024-2025**
- **Term Dates 2025-2026**



Contact Us
John McConnell
Headteacher

01953 602410
@PrimaryAshleigh

Message from Mr. McConnell

It's been a long half-term but the half-term break is here! I hope you all get some time to make some marvellous memories as a family over the next week.

I shall look forward to seeing you all on Monday 4th November!

Golden Ticket Raffle Winners

Deer – Bonny-Blue and Aled; **Fox** – Oscar and Rosie;
Birch – Mason and Addie; **Hazel** – Jack, Hope and Lincoln;
Maple – William;
Mulberry – Sebi; **Willow** – Teddy, William and Henrietta;
Sycamore – Jake.

Christmas Fair Scam Alert

- On Tuesday we were advised of a scam that is currently circulating on Facebook regarding a Christmas Fair at Ashleigh Primary School. They are posing as the PTA asking people to book pitches for a cost of £30.00 for one day or £55 for two days.
- We emailed all parents/carers on Tuesday to raise awareness of this scam.
- Please be aware that the PTA are **NOT** running any events of this nature and you should **NOT** make any payments.
- We have advised the victim to contact the police.
- If you do see any such details online, now or at any time in the future, please contact the school office.

School Lunches - Update

We're delighted to say that the replacement part for the kitchen equipment has been delivered to school today, and is due to be fitted over half term.

We should be back to normal menus from Monday 4th November and these have been sent out this afternoon for parents/carers to pre-book.

Thank you for your patience over the last two weeks!

Achievement Board

If your child/ren take part in any activities outside of school that you would like us to celebrate on our Achievement Board, please send a photo in to office@ashleigh.norfolk.sch.uk

Ashleigh Friends

1. The deadline for ordering your child's **Christmas cards/gifts** with their personalised design has been moved to 12pm on Monday 4th November. You can order using the proof card your child brought home last week.
 2. The raffle for the 5 **Advent Calendars** is now live!! You can purchase as many tickets as you wish for individual calendars via SchoolMoney to be in with a chance of winning one. Payment closes on 15th November ready for the raffle to be drawn on 20th November.
 3. Please remember you can donate any preloved Christmas jumpers in the green wheelie bin near Year 1 to be sold in our new Uniform Shop.
 4. **The Uniform Shop** will officially be opening on Friday 8th November. This will be open after school each day for you to purchase preloved uniform (and Christmas jumpers/PJs) using cash or a QR code transfer.
 5. There's still time to earn money for our school via the **Asda Cashpot**, which finishes on 30th November. Download the app, register and select Ashleigh as your chosen school for shopping in-store or online.
 6. Thank you for your support in fundraising for the children, and we hope you have a wonderful half-term break.
-

Flu Nasal Spray Vaccination - Reception to Year 6 - 7th November

- Information about the flu nasal spray has been emailed to all parents/carers of children in Reception through to Year 6.
- The Vaccination Team are visiting Ashleigh on Thursday 7th November.
- **You will need to complete the online form to give consent or decline for your child to receive the nasal spray vaccine.**
<https://eastanglia.schoolvaccination.uk/flu/2024/Norfolk>
- The nasal vaccine contains gelatine, for those who may not accept the use of porcine gelatine in medical products, you would need to request an injection.

The e-consent form can be translated into 10 languages:

Language	Link
English	https://eastanglia.schoolvaccination.uk/flu/2024/Norfolk
Polish	https://eastanglia.schoolvaccination.uk/pl/flu/2024/Norfolk
Spanish	https://eastanglia.schoolvaccination.uk/es/flu/2024/Norfolk

Punjabi	https://eastanglia.schoolvaccination.uk/pa/flu/2024/Norfolk
Bangla	https://eastanglia.schoolvaccination.uk/bn/flu/2024/Norfolk
Portuguese	https://eastanglia.schoolvaccination.uk/pt/flu/2024/Norfolk
Urdu	https://eastanglia.schoolvaccination.uk/ur/flu/2024/Norfolk
Romanian	https://eastanglia.schoolvaccination.uk/ro/flu/2024/Norfolk
Turkish	https://eastanglia.schoolvaccination.uk/tr/flu/2024/Norfolk
Somali	https://eastanglia.schoolvaccination.uk/so/flu/2024/Norfolk

Reception & Year 6 Children - 18th November

Opting your child out of the National Child Measurement Programme

Programme

- If you are happy for your child to be measured, you do not need to do anything.
- If you **do not** wish your child's height and weight to be checked, please follow the steps below in the grey box. Children will not be made to take part if they do not want to.

If you wish to opt your child out of the National Child Measurement Programme (NCMP) please follow the steps below:

- Contact us by **14th November 2024**
- Use the QR code or the link - please complete **parts 1 & 2** on the opt out form
<https://www.justonenorfolk.nhs.uk/our-services/school-height-and-weight-checks/national-child-measurement-programme-ncmp/>
- Or call 0300 300 0123
- Leave the following information:-
 - child's full name
 - NHS Number (if known)
 - date of birth
 - current home address



PE Days

Year	Days
Reception	PE starts after Christmas
1	Tuesdays and Fridays
2	Fox: Fridays (Forest School on Wednesdays) Deer: Wednesdays and Fridays
3	Mondays and Thursdays
4	Mondays and Wednesdays
5	Tuesdays and Thursdays
6	Wednesday mornings

Free School Meals Information

The Free School Meal voucher scheme has been extended to March 2025 and the following payments will be made to eligible families:

Month	Amount Per Eligible Child*
October	£15
November	£15
December	£45
January 2025	£15
February	£15
March	£15

* Please note that you have to apply separately for individual children, siblings do **not** qualify automatically.

To check if you are eligible for **free school meals** (Reception through to Year 6) please click [here](#).

Diary Dates [New or updated events](#)

2024-2025	
Thurs 24 th Oct	<ul style="list-style-type: none">3-5pm Y6 Girls' Football re Poringland (Home)School & Nursery close at 3pm and 3:15pm for half term
Mon 4 th Nov	<ul style="list-style-type: none">School & Nursery reopen after half term
Thurs 7 th Nov	<ul style="list-style-type: none">Reception to Year 6 Flu VaccinationsFrom 3:10pm Maple class parent evening appointments (rearranged from 17th October)
Fri 8 th Nov	<ul style="list-style-type: none">a.m. Year 4 trip to the cinema
Tues 12 th Nov	<ul style="list-style-type: none">4:15pm and 5:30pm Tours for Reception September 2025 Intake Parents/Carers
Mon 18 th Nov	<ul style="list-style-type: none">Reception and Year 6 NCMP Screening
Tues 19 th Nov	<ul style="list-style-type: none">School Sibling Photos
Wed 27 th Nov	<ul style="list-style-type: none">9am Mental Health Parent/Carer Workshop (details to follow)
Fri 29 th Nov	<ul style="list-style-type: none">a.m. Reception to Year 6 Flu Vaccinations ('mop-up' session)
Fri 20 th Dec	<ul style="list-style-type: none">School & Nursery close at 3pm and 3:15pm for Christmas holidays
Tues 7 th Jan 2025	<ul style="list-style-type: none">School & Nursery reopen after Christmas holidays
Wed 8 th Jan	<ul style="list-style-type: none">4:15pm Tour for Reception September 2025 Intake Parents/Carers
Mon 20 th Jan	<ul style="list-style-type: none">12:30-4:30pm Y3/4 Girls' Football (squad of 10), The Nest.

Fri 14 th Feb	<ul style="list-style-type: none"> School & Nursery close at 3pm and 3:15pm for half term
Mon 24 th Feb	<ul style="list-style-type: none"> School & Nursery reopen after half term
Thurs 6 th Mar	<ul style="list-style-type: none"> World Book Day
Fri 21 st Mar	<ul style="list-style-type: none"> Comic Relief – Non-School Uniform Day
Fri 4 th Apr	<ul style="list-style-type: none"> School & Nursery close at 3pm and 3:15pm for Easter holidays
Wed 23 rd Apr	<ul style="list-style-type: none"> School & Nursery reopen after Easter holidays
Mon 28 th Apr	<ul style="list-style-type: none"> 12:30-4:30pm Y3/4 Girls' Football (squad of 10), The Nest.
Mon 5 th May	<ul style="list-style-type: none"> Bank Holiday – School & Nursery closed
Mon 12 th May	<ul style="list-style-type: none"> Year 6 SATs
Tues 13 th May	<ul style="list-style-type: none"> Year 6 SATs
Wed 14 th May	<ul style="list-style-type: none"> Year 6 SATs
Thurs 15 th May	<ul style="list-style-type: none"> Year 6 SATs
Thurs 22 nd May	<ul style="list-style-type: none"> Reception Hearing & Vision Screening
Fri 23 rd May	<ul style="list-style-type: none"> School & Nursery close at 3pm and 3:15pm for half term
Mon 2 nd Jun	<ul style="list-style-type: none"> School & Nursery reopen after half term Reception Hearing & Vision Screening
Tues 3 rd Jun	<ul style="list-style-type: none"> Reception Hearing & Vision Screening
Tues 17 th Jun	<ul style="list-style-type: none"> NHS Dental check-ups Reception to Year 6
Fri 18 th Jul	<ul style="list-style-type: none"> p.m. Year 6 Crucial Crew event
Tues 22 nd Jul	<ul style="list-style-type: none"> School & Nursery close at 3pm and 3:15pm for Summer holidays

Community Events

Steps Community Food Store: The Hub, Ayton Road, NR18 0QJ

- 9.15am–10.45am every Tuesday
- 2:00-4:00pm every Thursday

Wymondham Heritage Museum – Half Term Activities



A Green Halloween – Thursday 31st October, 4:30-6:30pm at Wymondham Abbey

- Another nature-themed Halloween event for all ages in the Wymondham Abbey church and churchyard;
- Starts at 4.30 pm with a blessing of the churchyard;
- Craft activities inside the church;
- Bat, Moth and Bug-hunting with WyNG (Wymondham Nature Group);
- Homemade Pumpkin Soup to enjoy;
- Come in old clothes and bring a torch, waterproofs and wellies;
- Explore our amazing churchyard wildlife as darkness starts to fall...

To find out more, contact Hilary on 01953 605672

FREE event - no need to book – just come along and enjoy yourselves!

Pantomime at North Wymondham Community Centre – Thursday 28th November 2024 at 4pm

This heartfelt and energetic pantomime based on Charles Dickens' favourite Christmas tale, is full of popular songs, audience participation, puppetry and familiar Christmas cheer.

Join Fred, Bob Cratchit, Dame Lovelace and all the ghosts to help Ol' Ebenezer Scrooge as he journeys through Christmas past, present and yet to come.

Keeping many of the important elements of this Dickens classic, watch our 3 inspiring actors bring it to life for a younger audience.

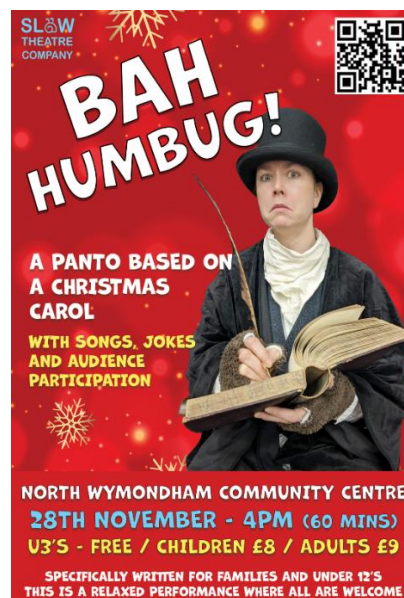
Book your ticket now for this delightful pantomime extravaganza brought to you by Norfolk-based Slow Theatre Company. All three actors are highly experienced in touring locally and nationally and will use their unique talents to bring the world of Ebenezer Scrooge to life.

We can't wait to return to North Wymondham Community Centre. This is a relaxed performance so there is no stage lighting and limited sudden loud noises. The actors will be available before the show to greet the audience and you are welcome to bring in, and use, stinging devices.

Approximately 60 minutes. Refreshments available beforehand. Doors open 30 minutes before the showtime.

Tickets £9/£8

Under 3's free



This calendar applies to community schools, community special schools, VC schools and nursery schools and sets the days on which school transport will be provided. While most Foundation, VA, foundation special, free schools and academy trusts who are able to set their own dates, adopt the Norfolk Model, we advise you to check with your child's school before making holiday or other commitments.

September 2024						
M	T	W	T	F	S	S
						1
2	3	4	5	6	7	8
9	10	11	12	13	14	15
16	17	18	19	20	21	22
23	24	25	26	27	28	29
30						

October 2024						
M	T	W	T	F	S	S
	1	2	3	4	5	6
7	8	9	10	11	12	13
14	15	16	17	18	19	20
21	22	23	24	25	26	27
28	29	30	31			

November 2024						
M	T	W	T	F	S	S
				1	2	3
4	5	6	7	8	9	10
11	12	13	14	15	16	17
18	19	20	21	22	23	24
25	26	27	28	29	30	

December 2024						
M	T	W	T	F	S	S
						1
2	3	4	5	6	7	8
9	10	11	12	13	14	15
16	17	18	19	20	21	22
23	24	25	26	27	28	29
30	31					

January 2025						
M	T	W	T	F	S	S
		1	2	3	4	5
6	7	8	9	10	11	12
13	14	15	16	17	18	19
20	21	22	23	24	25	26
27	28	29	30	31		

February 2025						
M	T	W	T	F	S	S
					1	2
3	4	5	6	7	8	9
10	11	12	13	14	15	16
17	18	19	20	21	22	23
24	25	26	27	28		

March 2025						
M	T	W	T	F	S	S
					1	2
3	4	5	6	7	8	9
10	11	12	13	14	15	16
17	18	19	20	21	22	23
24	25	26	27	28	29	30
31						

April 2025						
M	T	W	T	F	S	S
	1	2	3	4	5	6
7	8	9	10	11	12	13
14	15	16	17	18	19	20
21	22	23	24	25	26	27
28	29	30				

May 2025						
M	T	W	T	F	S	S
			1	2	3	4
5	6	7	8	9	10	11
12	13	14	15	16	17	18
19	20	21	22	23	24	25
26	27	28	29	30	31	

June 2025						
M	T	W	T	F	S	S
						1
2	3	4	5	6	7	8
9	10	11	12	13	14	15
16	17	18	19	20	21	22
23	24	25	26	27	28	29
30						

July 2025						
M	T	W	T	F	S	S
	1	2	3	4	5	6
7	8	9	10	11	12	13
14	15	16	17	18	19	20
21	22	23	24	25	26	27
28	29	30	31			

August 2025						
M	T	W	T	F	S	S
				1	2	3
4	5	6	7	8	9	10
11	12	13	14	15	16	17
18	19	20	21	22	23	24
25	26	27	28	29	30	31

Key : White dates - schools open to pupils
 Yellow dates - pupil holiday
 Red dates - bank holiday

Five staff training days will be selected from yellow dates, we suggest 2 & 3 September, 25 October, 6 January and 22 April. Some may choose to use twilight hours for staff training instead of some or all of these.



Norfolk County Council 2025-2026

Norfolk Model Calendar

This calendar applies to community schools, community special schools, VC schools and nursery schools and sets the days on which school transport will be provided. While most Foundation, VA, foundation special, free schools and academy trusts who are able to set their own dates, adopt the Norfolk Model, we advise you to check with your child's school before making holiday or other commitments.

September 2025						
M	T	W	T	F	S	S
1	2	3	4	5	6	7
8	9	10	11	12	13	14
15	16	17	18	19	20	21
22	23	24	25	26	27	28
29	30					

October 2025						
M	T	W	T	F	S	S
		1	2	3	4	5
6	7	8	9	10	11	12
13	14	15	16	17	18	19
20	21	22	23	24	25	26
27	28	29	30	31		

November 2025						
M	T	W	T	F	S	S
					1	2
3	4	5	6	7	8	9
10	11	12	13	14	15	16
17	18	19	20	21	22	23
24	25	26	27	28	29	30

December 2025						
M	T	W	T	F	S	S
1	2	3	4	5	6	7
8	9	10	11	12	13	14
15	16	17	18	19	20	21
22	23	24	25	26	27	28
29	30	31				

January 2026						
M	T	W	T	F	S	S
			1	2	3	4
5	6	7	8	9	10	11
12	13	14	15	16	17	18
19	20	21	22	23	24	25
26	27	28	29	30	31	

February 2026						
M	T	W	T	F	S	S
						1
2	3	4	5	6	7	8
9	10	11	12	13	14	15
16	17	18	19	20	21	22
23	24	25	26	27	28	

March 2026						
M	T	W	T	F	S	S
						1
2	3	4	5	6	7	8
9	10	11	12	13	14	15
16	17	18	19	20	21	22
23	24	25	26	27	28	29
30	31					

April 2026						
M	T	W	T	F	S	S
		1	2	3	4	5
6	7	8	9	10	11	12
13	14	15	16	17	18	19
20	21	22	23	24	25	26
27	28	29	30			

May 2026						
M	T	W	T	F	S	S
				1	2	3
4	5	6	7	8	9	10
11	12	13	14	15	16	17
18	19	20	21	22	23	24
25	26	27	28	29	30	31

June 2026						
M	T	W	T	F	S	S
1	2	3	4	5	6	7
8	9	10	11	12	13	14
15	16	17	18	19	20	21
22	23	24	25	26	27	28
29	30					

July 2026						
M	T	W	T	F	S	S
		1	2	3	4	5
6	7	8	9	10	11	12
13	14	15	16	17	18	19
20	21	22	23	24	25	26
27	28	29	30	31		

August 2026						
M	T	W	T	F	S	S
					1	2
3	4	5	6	7	8	9
10	11	12	13	14	15	16
17	18	19	20	21	22	23
24	25	26	27	28	29	30
31						

Key : White dates - schools open to pupils
 Yellow dates - pupil holiday
 Red dates - bank holiday

Five staff training days will be selected from yellow dates, we suggest 1st & 2nd September, 5th January, 13th April and 20th July. Some may choose to use twilight hours for staff training instead of some or all of these.