



# Ashleigh Primary School and Nursery

office@ashleigh.norfolk.sch.uk  
nursery@ashleighprimary.net  
treehouse@ashleighprimary.net

21<sup>st</sup> April 2023

- Message from Mr. McConnell
- Caitlin's Hero Arm Campaign
- Golden Ticket Winners
- Punctuality
- Ashleigh Friends
- Diary Dates 2022-2023
- Summer Fete
- Free School Meals
- Emergency Alert System Test
- Community Events
- School Calendar 2022-2023
- School Calendar 2023-2024



**Contact Us**  
**John McConnell**  
**Headteacher**

**01953 602410**

**@PrimaryAshleigh**

## Message from Mr. McConnell

What a brilliant start to the summer term! I can't decide whether my personal highlight is the older children being outside, on the field and using the Tingle Tangle, or the drumming workshop with Jeff from Status Quo. There has definitely been lots of Ashleigh magic already this term!

## Caitlin's Hero Arm GoFundMe Campaign

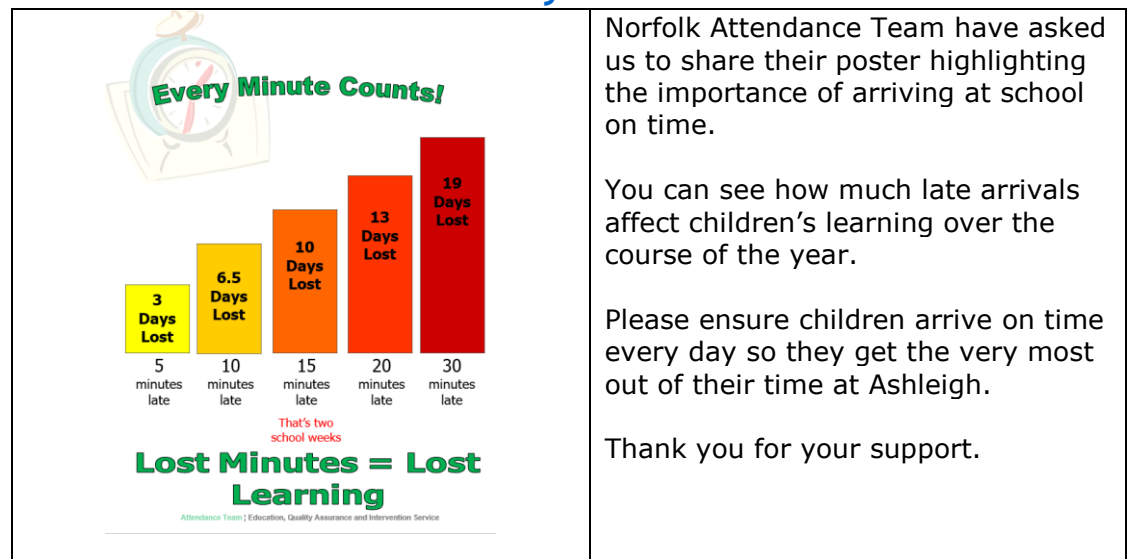
- Caitlin's parents have kindly shared with us the total raised by their GoFundMe campaign which is a wonderful **£16,700!** Caitlin is scheduled to have her casting operation over the summer, and will hopefully have her hero arm ready for September. We're delighted for the whole family, who are extremely excited and appreciative of everyone's support.
- Parents and staff donated £371 via SchoolMoney.
- Treehouse raised £46.50 selling cakes.
- A huge thank you to everyone who contributed!

## Golden Ticket Winners

A massive well done to all the golden ticket winners this week!

**Barn Owl** – Otis; **Deer** – Cooper; **Fox** – Alek and Lilly; **Hazel** – Beth; **Elm** – Hope; **Maple** – Walter; **Mulberry** – Ruby; **Willow** – Lauren; **Ash** – Oliver, Lilli-May and Esme; **Sycamore** – Jack M and Noah.

## Attendance & Punctuality



## Ashleigh Friends

Thank you to everyone who came to the AGM last night. The new Elected Officers are:

- ❖ Chair - Clare Suter
- ❖ Vice-Chair (job-share) - Maria Leathersich and Kay Newell
- ❖ Treasurer - Maria Hutson
- ❖ Secretary - Gilly Snook

We would like to say a huge thank you to Jemima and Jordy for all their hard work over the past few years.

We're now making the finishing touches to our Quiz Night next Friday - everyone who has signed up should have received all the information they need, but if you haven't or have any queries please let us know via

[ashleighfriendspta@hotmail.co.uk](mailto:ashleighfriendspta@hotmail.co.uk)

We're excited to say that after the success of our Easter sweetie cone sale, we're going to be doing another sale after school on Friday 5<sup>th</sup> May. We know many people missed out last time so the sweet cones and cakes will be making a special one-off return appearance! This time they will be red, white and blue themed, to tie in with the theme for the non-uniform day and to help kick off the coronation long weekend in style!

## Diary Dates

New or updated events

<u>2022-2023 Dates</u>	
Wed 26 <sup>th</sup> Apr	• a.m. <b>Elm</b> class swimming
<b>Thurs 27<sup>th</sup> Apr</b>	• <b>School &amp; Nursery closed due to NEU strike action</b>
Fri 28 <sup>th</sup> Apr	• <b>School Class Photos</b> • 7:30pm Quiz & Chips Night
Mon 1 <sup>st</sup> May	• School closed for Bank Holiday
<b>Tues 2<sup>nd</sup> May</b>	• <b>School &amp; Nursery closed due to NEU strike action</b>
Wed 3 <sup>rd</sup> May	• a.m. <b>Elm</b> class swimming • 10-11am Happy Smiles Club visiting <b>Reception</b>
Fri 5 <sup>th</sup> May	• Ashleigh Friends Non-School Uniform Day: Red, White & Blue theme
<b>Mon 8<sup>th</sup> May</b>	• <b>School &amp; Nursery closed for additional Bank Holiday for the King's Coronation</b>
Tues 9 <sup>th</sup> May	• <b>Year 6 SATS</b>
Wed 10 <sup>th</sup> May	• <b>Year 6 SATS</b>
Thurs 11 <sup>th</sup> May	• <b>Year 6 SATS</b>
Fri 12 <sup>th</sup> May	• <b>Year 6 SATS</b>
Fri 19 <sup>th</sup> May	• p.m. <b>Year 6</b> trip
Mon 22 <sup>nd</sup> May	• 3:15pm <b>Year 1</b> Reading Workshop (details to follow)
Wed 24 <sup>th</sup> May	• 3:15pm <b>Year 1</b> Reading Workshop (details to follow)
Fri 26 <sup>th</sup> May	• School closes for half term
Mon 5 <sup>th</sup> Jun	• School reopens after half term
Wed 14 <sup>th</sup> Jun	• Sports Day & Family Picnic
Mon 19 <sup>th</sup> Jun	• <b>Year 5</b> to Harry Potter Warner Brothers Studio Tour
Wed 21 <sup>st</sup> Jun	• Sports Day Reserve (if 14 <sup>th</sup> June is cancelled)
Wed 28 <sup>th</sup> Jun	• <b>Year 4</b> to visit the Royal Norfolk Show

Sat 24 <sup>th</sup> Jun	<ul style="list-style-type: none"> <li>Save the Date! Ashleigh Summer Fair 50<sup>th</sup> Anniversary Celebrations</li> </ul>
Fri 7 <sup>th</sup> Jul	<ul style="list-style-type: none"> <li>From 4pm – <b>Reception to Year 5</b> PTA Discos</li> </ul>
Mon 10 <sup>th</sup> Jul	<ul style="list-style-type: none"> <li><b>Year 2</b> to Gressenhall</li> </ul>
Fri 14 <sup>th</sup> Jul	<ul style="list-style-type: none"> <li>4:30-6:30pm – <b>Year 6</b> Leavers' Disco</li> </ul>
Tues 18 <sup>th</sup> Jul	<ul style="list-style-type: none"> <li>1:30pm <b>Year 6</b> Leavers' Performance</li> <li>6:30pm <b>Year 6</b> Leavers' Performance</li> </ul>
Wed 19 <sup>th</sup> Jul	<ul style="list-style-type: none"> <li>6:30pm <b>Year 6</b> Leavers' Performance</li> </ul>
Fri 21 <sup>st</sup> Jul	<ul style="list-style-type: none"> <li>School closes for Summer holidays</li> </ul>

## Ashleigh Summer Fete - 50<sup>th</sup> Birthday Celebrations

**Saturday 24<sup>th</sup> June, 11am-3pm**

Please email any memories or photos of Ashleigh that you would like to share to:  
[office@ashleigh.norfolk.sch.uk](mailto:office@ashleigh.norfolk.sch.uk)



## Free School Meals Application

Families that are eligible for free school meals will receive the below payments from May 2023 to March 2024. If you have more than one child your monthly voucher will cover both/all of the children (so families with two children would receive £30 for May, with three children £45 for May etc.). Voucher codes will be emailed to the primary contact for each eligible child.

Month	Amount per child	Go live date	Expiry date
May	£15	5 <sup>th</sup> May 2023	7 <sup>th</sup> July 2023
June	£15	9 <sup>th</sup> June 2023	5 <sup>th</sup> August 2023

July	£30	7 <sup>th</sup> July 2023	9 <sup>th</sup> September 2023
August	£30	11 <sup>th</sup> August 2023	11 <sup>th</sup> November 2023
September	£15	8 <sup>th</sup> September 2023	8 <sup>th</sup> December 2023
October	£15	13 <sup>th</sup> October 2023	13 <sup>th</sup> January 2024
November	£15	10 <sup>th</sup> November 2023	10 <sup>th</sup> February 2024
December	£45	4 <sup>th</sup> December 2023	4 <sup>th</sup> March 2024
January 2024	£15	5 <sup>th</sup> January 2024	5 <sup>th</sup> April 2024
February	£15	9 <sup>th</sup> February 2024	9 <sup>th</sup> May 2024
March	£15	8 <sup>th</sup> March 2024	8 <sup>th</sup> June 2024

To check if you are eligible for **free school meals**  
❖ (Reception through to Year 6) please click **here**.

## Emergency Alert Test on Sunday 23<sup>rd</sup> April at 3pm

- The UK government's new Emergency Alerts system is now live. The system will enable people to be contacted via their mobile phone when lives are in danger.
- Emergency Alerts are sent to compatible mobile phones within an area of risk. They don't track your location, need your phone number, or collect personal data, and only the emergency services can send them.
- You can check an alert is genuine at [www.gov.uk/alerts](http://www.gov.uk/alerts)
- An Emergency Alert is a loud, siren-like sound with a message on your screen. Find out more at [www.gov.uk/alerts](http://www.gov.uk/alerts)

## Community Events

### **Steps Community Food Store**

- 9.15am – 10.30am every Tuesday
- Thursday morning by appointment
- The Hub, Ayton Road, Wymondham, NR18 0QJ
- Tel: 07709 786618 E:info@hubproject.org.uk
- Help for those struggling to afford regular meals.
- Your choice of ambient foods at 50% less than average supermarket costs.
- Free fresh fruit & veg, eggs, bread, baby items and ladies sanitary items.
- All food items are 'in date'.
- Annual membership £1 until 30 April 2023 (normally £3.50):
  - Free refreshments;
  - Free birthday cakes for children (subject to availability);
  - Access to grant funding (subject to availability and qualifying conditions)

Self-referral accepted, please bring proof of address

### **Monday 24th April: Workshop:**

**Led by Rupert Read - Professor at the University of East Anglia, and author of "Why Climate Breakdown Matters" "Parents for a Future"**

- 6 pm start until 8 pm. Doors open 5.30pm.
- Location: Abbey Hall, Church Street, Wymondham, NR18 0PL
- Cost: Free but we are collecting funds for Wymondham Growing Together which is a project to grow herbs, and vegetables, on spare bits of land. Greening Wymondham undertake to record and bank any proceeds and reserve it for edible growing projects for and with the community.
- Facilitated by Derryn Ellingham, MA and experienced facilitator.
- Supported by Greening Wymondham

**Friday 28<sup>th</sup> April: Wymondham LINKS Parent and Carer Support Group;**  
**9:30-11:30am**

- Do you have a child or children with SEN or behavioural needs? Do you need support and advice from someone who has been through the same things? Do you just need someone to chat to?
- Come join us for a chat, a listening ear, to share your expertise and to connect with other parents.
- Join us on Friday the 28th of April where we will be joined by Jayne Mallet who works with the Family Networking Approach team.
- If you have any questions or queries, email Micha Butler: [psa@robertkett.net](mailto:psa@robertkett.net)

**Coronation Town-Wide Community Garage Sale**

- Sunday 7th May from 10.00am - 3.00pm.
- No registration fee but an optional donation to North Wymondham Community Centre welcomed.
- Text 07851 370666 or email [tony@valemail.co.uk](mailto:tony@valemail.co.uk) with your name and address to book a place.
- Updated information can be found on the North Wymondham Community Centre Facebook page.



This calendar applies to community schools, community special schools, VC schools and nursery schools and sets the days on which school transport will be provided. While most Foundation, VA, foundation special, free schools and academy trusts who are able to set their own dates, adopt the Norfolk Model, we advise you to check with your child's school before making holiday or other commitments.

September 2022						
M	T	W	T	F	S	S
			1	2	3	4
5	6	7	8	9	10	11
12	13	14	15	16	17	18
19	20	21	22	23	24	25
26	27	28	29	30		

October 2022						
M	T	W	T	F	S	S
					1	2
3	4	5	6	7	8	9
10	11	12	13	14	15	16
17	18	19	20	21	22	23
24	25	26	27	28	29	30
31						

November 2022						
M	T	W	T	F	S	S
	1	2	3	4	5	6
7	8	9	10	11	12	13
14	15	16	17	18	19	20
21	22	23	24	25	26	27
28	29	30				

December 2022						
M	T	W	T	F	S	S
			1	2	3	4
5	6	7	8	9	10	11
12	13	14	15	16	17	18
19	20	21	22	23	24	25
26	27	28	29	30	31	

January 2023						
M	T	W	T	F	S	S
						1
2	3	4	5	6	7	8
9	10	11	12	13	14	15
16	17	18	19	20	21	22
23	24	25	26	27	28	29
30	31					

February 2023						
M	T	W	T	F	S	S
		1	2	3	4	5
6	7	8	9	10	11	12
13	14	15	16	17	18	19
20	21	22	23	24	25	26
27	28					

March 2023						
M	T	W	T	F	S	S
		1	2	3	4	5
6	7	8	9	10	11	12
13	14	15	16	17	18	19
20	21	22	23	24	25	26
27	28	29	30	31		

April 2023						
M	T	W	T	F	S	S
					1	2
3	4	5	6	7	8	9
10	11	12	13	14	15	16
17	18	19	20	21	22	23
24	25	26	27	28	29	30

May 2023						
M	T	W	T	F	S	S
1	2	3	4	5	6	7
8	9	10	11	12	13	14
15	16	17	18	19	20	21
22	23	24	25	26	27	28
29	30	31				

June 2023						
M	T	W	T	F	S	S
			1	2	3	4
5	6	7	8	9	10	11
12	13	14	15	16	17	18
19	20	21	22	23	24	25
26	27	28	29	30		

July 2023						
M	T	W	T	F	S	S
					1	2
3	4	5	6	7	8	9
10	11	12	13	14	15	16
17	18	19	20	21	22	23
24	25	26	27	28	29	30
31						

August 2023						
M	T	W	T	F	S	S
	1	2	3	4	5	6
7	8	9	10	11	12	13
14	15	16	17	18	19	20
21	22	23	24	25	26	27
28	29	30	31			

Key : White dates - schools open to pupils  
 Yellow dates - pupil holiday  
 Red dates - bank holiday

Five staff training days will be selected from yellow dates, we suggest 2nd & 5th September, 3rd January, 17th April and 24th July. Some may choose to use twilight hours for staff training instead of some or all of these.





Norfolk County Council

# 2023-2024

## Norfolk Model Calendar

This calendar applies to community schools, community special schools, VC schools and nursery schools and sets the days on which school transport will be provided. While most Foundation, VA, foundation special, free schools and academy trusts who are able to set their own dates, adopt the Norfolk Model, we advise you to check with your child's school before making holiday or other commitments.

September 2023						
M	T	W	T	F	S	S
				1	2	3
4	5	6	7	8	9	10
11	12	13	14	15	16	17
18	19	20	21	22	23	24
25	26	27	28	29	30	

October 2023						
M	T	W	T	F	S	S
						1
2	3	4	5	6	7	8
9	10	11	12	13	14	15
16	17	18	19	20	21	22
23	24	25	26	27	28	29
30	31					

November 2023						
M	T	W	T	F	S	S
		1	2	3	4	5
6	7	8	9	10	11	12
13	14	15	16	17	18	19
20	21	22	23	24	25	26
27	28	29	30			

December 2023						
M	T	W	T	F	S	S
				1	2	3
4	5	6	7	8	9	10
11	12	13	14	15	16	17
18	19	20	21	22	23	24
25	26	27	28	29	30	31

January 2024						
M	T	W	T	F	S	S
1	2	3	4	5	6	7
8	9	10	11	12	13	14
15	16	17	18	19	20	21
22	23	24	25	26	27	28
29	30	31				

February 2024						
M	T	W	T	F	S	S
			1	2	3	4
5	6	7	8	9	10	11
12	13	14	15	16	17	18
19	20	21	22	23	24	25
26	27	28	29			

March 2024						
M	T	W	T	F	S	S
				1	2	3
4	5	6	7	8	9	10
11	12	13	14	15	16	17
18	19	20	21	22	23	24
25	26	27	28	29	30	31

April 2024						
M	T	W	T	F	S	S
1	2	3	4	5	6	7
8	9	10	11	12	13	14
15	16	17	18	19	20	21
22	23	24	25	26	27	28
29	30					

May 2024						
M	T	W	T	F	S	S
		1	2	3	4	5
6	7	8	9	10	11	12
13	14	15	16	17	18	19
20	21	22	23	24	25	26
27	28	29	30	31		

June 2024						
M	T	W	T	F	S	S
					1	2
3	4	5	6	7	8	9
10	11	12	13	14	15	16
17	18	19	20	21	22	23
24	25	26	27	28	29	30

July 2024						
M	T	W	T	F	S	S
1	2	3	4	5	6	7
8	9	10	11	12	13	14
15	16	17	18	19	20	21
22	23	24	25	26	27	28
29	30	31				

August 2024						
M	T	W	T	F	S	S
			1	2	3	4
5	6	7	8	9	10	11
12	13	14	15	16	17	18
19	20	21	22	23	24	25
26	27	28	29	30	31	

Key : White dates - schools open to pupils  
Yellow dates - pupil holiday  
Red dates - bank holiday

Five staff training days will be selected from yellow dates, we suggest 4th & 5th September, 3 January, 28th March and 22 July. Some may choose to use twilight hours for staff training instead of some or all of these.