



Ashleigh Primary School and Nursery

office@ashleigh.norfolk.sch.uk
nursery@ashleighprimary.net
treehouse@ashleighprimary.net

8th November 2024

- Message from Mr. McConnell
- Golden Ticket Winners
- Flu Vaccinations 29th November
- PTA Uniform Shop
- Odd Socks Day 12th November
- Children in Need 15th November
- Reception & Y6 Height & Weight 18th November
- Christmas Event Dates
- Ashleigh Friends
- PE Days
- Free School Meal Info
- Diary Dates 2024-2025
- Community Events
- Term Dates 2024-2025
- Term Dates 2025-2026



Message from Mr. McConnell

What a great week! It makes me really happy to see the children come back after a week off and get straight back into learning and enjoying being with their friends. We've done some great learning this week and topped it all off with a Year 4 trip to the cinema to see 'The Wild Robot'. The cinema trip was nearly my highlight of the week but then I saw the number of words our Year 6s have read this term so far and I nearly fell off my chair. Well done Year 6!

Golden Ticket Raffle Winners

Barn Owl – Aubrie, Theo and Mila; **Fox** – Jacob;
Hazel – Arthur and Bjorn; **Elm** – Noah;
Mulberry – Lily; **Willow** – Beth, Georgia and William;
Ash – Josie; **Sycamore** – Emily P, Amelia and Elisha.

The raffle for 100% Attendance for Autumn 1 will be drawn next Friday, certificates have gone home today.

Well done everyone!

Flu Vaccinations - Reception to Year 6

The Vaccination Team are returning to school on **Friday 29th November** to vaccinate children outstanding from yesterday's session or absent on 7th November (in all cases with parent consent only).

PTA Uniform Shop Official Opening!

We were delighted that Councillor Michael Rosen could join us today to officially open the wonderful Ashleigh Friends Pre-Loved Uniform Shop!



Contact Us
John McConnell
Headteacher

01953 602410
@PrimaryAshleigh

The Uniform Shop was open today for parents/carers to have a look after school, more details of when it will be fully open will follow next week!

Odd Socks Day - Tuesday 12th November

- Anti-Bullying Week will take place from Monday 11th – Friday 15th November this year, with the theme: Choose Respect.
- This year, we are encouraging pupils (and staff!) to take part in **Odd Socks Day** to celebrate that we are all different, all equal, all learning.
- This will take place on **Tuesday 12th November** and we hope lots of you take part!

Children in Need - Friday 15th November

- Children that want to take part should still come in school uniform/PE kit (if it's a PE day) but can wear something spotty, or yellow, in support of Children in Need on Friday 15th November.
- For those that want to contribute, a SchoolMoney payment link will be sent out on Monday.

Reception & Year 6 Children - 18th November

Opting your child out of the National Child Measurement Programme

- If you are happy for your child to be measured, you do not need to do anything.
- If you **do not** wish your child's height and weight to be checked, please follow the steps below in the grey box. Children will not be made to take part if they do not want to.

If you wish to opt your child out of the National Child Measurement Programme (NCMP) please follow the steps below:

- Contact us by **14th November 2024**
- Use the QR code or the link - please complete **parts 1 & 2** on the opt out form
<https://www.justonenorfolk.nhs.uk/our-services/school-height-and-weight-checks/national-child-measurement-programme-ncmp/>
- Or call 0300 300 0123
- Leave the following information:-
 - child's full name
 - NHS Number (if known)
 - date of birth
 - current home address



Christmas Events - Dates so far

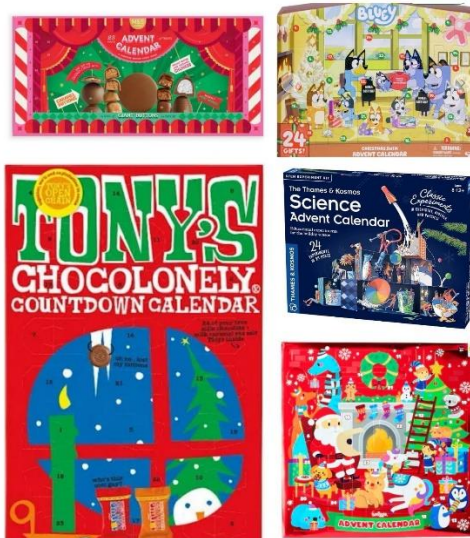
- Please keep checking the Diary Dates section for new events that are added each week, highlighted in yellow.

- Christmas events for **KS2** and **Nursery** will follow, as will further details about tickets for **Reception** and **Year 1** performances, and the arrangements for the **Year 2** performance at Wymondham Abbey.

Tues 3 rd Dec	<ul style="list-style-type: none"> • 9am Reception Christmas DVD being filmed (no audience)
Wed 4 th Dec	<ul style="list-style-type: none"> • 9:30am Reception Christmas Performance • 2:00pm Reception Christmas Performance
Thurs 5 th Dec	<ul style="list-style-type: none"> • 9:30am Year 1 Christmas Performance • 2:30pm Year 1 Christmas Performance
Fri 6 th Dec	<ul style="list-style-type: none"> • p.m. Year 2 Christmas Performance at Wymondham Abbey
Mon 16 th Dec	<ul style="list-style-type: none"> • 9:15-10:15am Reception Family Craft Event
Tues 17 th Dec	<ul style="list-style-type: none"> • 9:15-10:15am Reception Family Craft Event
Wed 18 th Dec	<ul style="list-style-type: none"> • Christmas Jumper & Christmas Lunch Day

Ashleigh Friends

1. Thank you to everyone who purchased from the Christmas shop - your designs are with the company being printed and will be delivered to the school once ready. If you missed the deadline but want to buy something please get in touch with us or the school office.
2. The advent calendar raffle is live and tickets are available to purchase until Friday 15th November with the lucky winners being announced on Wednesday 20th November. Tickets can be purchased via the School Money app and you can buy however many tickets you wish for each calendar at £1 each. Five brilliant prizes are up for grabs:



3. If you're having a pre-Christmas clear out, remember we are taking donations of Christmas jumpers and pyjamas. These can be dropped off in the green wheelie bin by the Year 1 entrance.

PE Days

Year	Days
Reception	PE starts after Christmas
1	Tuesdays and Fridays
2	Fox: Fridays (Forest School on Wednesdays) Deer: Wednesdays and Fridays
3	Mondays and Thursdays
4	Mondays and Wednesdays
5	Tuesdays and Thursdays
6	Wednesday mornings

Free School Meals Information

The Free School Meal voucher scheme has been extended to March 2025 and the following payments will be made to eligible families:

Month	Amount Per Eligible Child*
November	£15
December	£45
January 2025	£15
February	£15
March	£15

* Please note that you have to apply separately for individual children, siblings do **not** qualify automatically.

To check if you are eligible for **free school meals** (Reception through to Year 6) please click [here](#).

WhatsApp 'Add Everyone' Groups

Please check your child's phone to make sure they are not being included in any 'Add Everyone' groups. We have been advised today that these groups can contain highly explicit, inappropriate images and content.

Set Privacy Settings

Work with your child to set [privacy settings](#) that ensure only their contacts can add them to groups and view their information. Remind them that friends can still add them to group chats, so discuss how to handle invitations they receive.

There is more information in the Online Safety Newsletter emailed to parents earlier this week.

Diary Dates New or updated events

2024-2025	
Tues 12 th Nov	<ul style="list-style-type: none"> 4:15pm and 5:30pm Tours for Reception September 2025 Intake Parents/Carers
Fri 15 th Nov	<ul style="list-style-type: none"> Children in Need (wear something spotty or yellow) Year 1 trip to Strangers Hall
Mon 18 th Nov	<ul style="list-style-type: none"> Reception and Year 6 NCMP Screening
Tues 19 th Nov	<ul style="list-style-type: none"> School Sibling Photos
Wed 27 th Nov	<ul style="list-style-type: none"> 9am Mental Health Parent/Carer Workshop (details to follow)
Fri 29 th Nov	<ul style="list-style-type: none"> a.m. Reception to Year 6 Flu Vaccinations ('mop-up' session)
Tues 3 rd Dec	<ul style="list-style-type: none"> 9am Reception Christmas DVD being filmed (no audience)
Wed 4 th Dec	<ul style="list-style-type: none"> 9:30am Reception Christmas Performance 2:00pm Reception Christmas Performance
Thurs 5 th Dec	<ul style="list-style-type: none"> 9:30am Year 1 Christmas Performance 2:30pm Year 1 Christmas Performance
Fri 6 th Dec	<ul style="list-style-type: none"> p.m. Year 2 Christmas Performance at Wymondham Abbey
Mon 16 th Dec	<ul style="list-style-type: none"> 9:15-10:15am Reception Family Craft Event
Tues 17 th Dec	<ul style="list-style-type: none"> 9:15-10:15am Reception Family Craft Event
Wed 18 th Dec	<ul style="list-style-type: none"> Christmas Jumper & Christmas Lunch Day
Fri 20 th Dec	<ul style="list-style-type: none"> School & Nursery close at 3pm and 3:15pm for Christmas holidays
Tues 7 th Jan 2025	<ul style="list-style-type: none"> School & Nursery reopen after Christmas holidays
Wed 8 th Jan	<ul style="list-style-type: none"> 4:15pm Tour for Reception September 2025 Intake Parents/Carers
Fri 14 th Feb	<ul style="list-style-type: none"> School & Nursery close at 3pm and 3:15pm for half term
Mon 24 th Feb	<ul style="list-style-type: none"> School & Nursery reopen after half term
Thurs 6 th Mar	<ul style="list-style-type: none"> World Book Day
Fri 21 st Mar	<ul style="list-style-type: none"> Comic Relief – Non-School Uniform Day
Fri 4 th Apr	<ul style="list-style-type: none"> School & Nursery close at 3pm and 3:15pm for Easter holidays
Wed 23 rd Apr	<ul style="list-style-type: none"> School & Nursery reopen after Easter holidays
Mon 5 th May	<ul style="list-style-type: none"> Bank Holiday – School & Nursery closed
Mon 12 th May	<ul style="list-style-type: none"> Year 6 SATs
Tues 13 th May	<ul style="list-style-type: none"> Year 6 SATs
Wed 14 th May	<ul style="list-style-type: none"> Year 6 SATs
Thurs 15 th May	<ul style="list-style-type: none"> Year 6 SATs
Thurs 22 nd May	<ul style="list-style-type: none"> Reception Hearing & Vision Screening
Fri 23 rd May	<ul style="list-style-type: none"> School & Nursery close at 3pm and 3:15pm for half term
Mon 2 nd Jun	<ul style="list-style-type: none"> School & Nursery reopen after half term Reception Hearing & Vision Screening

Tues 3 rd Jun	• Reception Hearing & Vision Screening
Tues 17 th Jun	• NHS Dental check-ups Reception to Year 6
Fri 18 th Jul	• p.m. Year 6 Crucial Crew event
Tues 22 nd Jul	• School & Nursery close at 3pm and 3:15pm for Summer holidays

Community Events

Steps Community Food Store: The Hub, Ayton Road, NR18 0QJ

- 9.15am–10.45am every Tuesday
- 2:00–4:00pm every Thursday

Wymondham Magazine

[Read the E-Edition here](#)

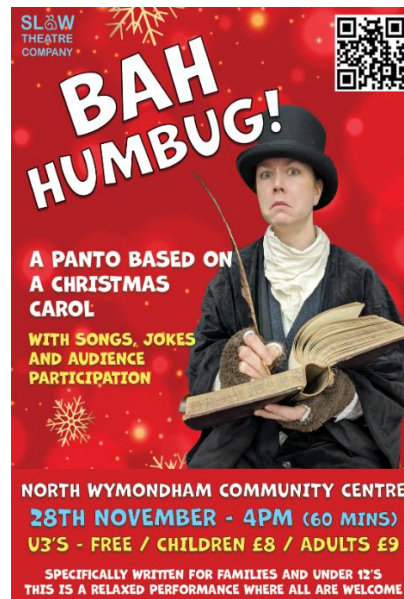
Pantomime at North Wymondham Community Centre – Thursday 28th November 2024 at 4pm

This heartfelt and energetic pantomime based on Charles Dickens' favourite Christmas tale, is full of popular songs, audience participation, puppetry and familiar Christmas cheer.

This is a relaxed performance so there is no stage lighting and limited sudden loud noises. The actors will be available before the show to greet the audience and you are welcome to bring in, and use, stinging devices. Approximately 60 minutes. Refreshments available beforehand. Doors open 30 minutes before the showtime.

Tickets £9/£8

Under 3's free



This calendar applies to community schools, community special schools, VC schools and nursery schools and sets the days on which school transport will be provided. While most Foundation, VA, foundation special, free schools and academy trusts who are able to set their own dates, adopt the Norfolk Model, we advise you to check with your child's school before making holiday or other commitments.

September 2024						
M	T	W	T	F	S	S
						1
2	3	4	5	6	7	8
9	10	11	12	13	14	15
16	17	18	19	20	21	22
23	24	25	26	27	28	29
30						

October 2024						
M	T	W	T	F	S	S
	1	2	3	4	5	6
7	8	9	10	11	12	13
14	15	16	17	18	19	20
21	22	23	24	25	26	27
28	29	30	31			

November 2024						
M	T	W	T	F	S	S
				1	2	3
4	5	6	7	8	9	10
11	12	13	14	15	16	17
18	19	20	21	22	23	24
25	26	27	28	29	30	

December 2024						
M	T	W	T	F	S	S
						1
2	3	4	5	6	7	8
9	10	11	12	13	14	15
16	17	18	19	20	21	22
23	24	25	26	27	28	29
30	31					

January 2025						
M	T	W	T	F	S	S
		1	2	3	4	5
6	7	8	9	10	11	12
13	14	15	16	17	18	19
20	21	22	23	24	25	26
27	28	29	30	31		

February 2025						
M	T	W	T	F	S	S
					1	2
3	4	5	6	7	8	9
10	11	12	13	14	15	16
17	18	19	20	21	22	23
24	25	26	27	28		

March 2025						
M	T	W	T	F	S	S
					1	2
3	4	5	6	7	8	9
10	11	12	13	14	15	16
17	18	19	20	21	22	23
24	25	26	27	28	29	30
31						

April 2025						
M	T	W	T	F	S	S
	1	2	3	4	5	6
7	8	9	10	11	12	13
14	15	16	17	18	19	20
21	22	23	24	25	26	27
28	29	30				

May 2025						
M	T	W	T	F	S	S
			1	2	3	4
5	6	7	8	9	10	11
12	13	14	15	16	17	18
19	20	21	22	23	24	25
26	27	28	29	30	31	

June 2025						
M	T	W	T	F	S	S
						1
2	3	4	5	6	7	8
9	10	11	12	13	14	15
16	17	18	19	20	21	22
23	24	25	26	27	28	29
30						

July 2025						
M	T	W	T	F	S	S
	1	2	3	4	5	6
7	8	9	10	11	12	13
14	15	16	17	18	19	20
21	22	23	24	25	26	27
28	29	30	31			

August 2025						
M	T	W	T	F	S	S
				1	2	3
4	5	6	7	8	9	10
11	12	13	14	15	16	17
18	19	20	21	22	23	24
25	26	27	28	29	30	31

Key : White dates - schools open to pupils
 Yellow dates - pupil holiday
 Red dates - bank holiday

Five staff training days will be selected from yellow dates, we suggest 2 & 3 September, 25 October, 6 January and 22 April. Some may choose to use twilight hours for staff training instead of some or all of these.



Norfolk County Council 2025-2026

Norfolk Model Calendar

This calendar applies to community schools, community special schools, VC schools and nursery schools and sets the days on which school transport will be provided. While most Foundation, VA, foundation special, free schools and academy trusts who are able to set their own dates, adopt the Norfolk Model, we advise you to check with your child's school before making holiday or other commitments.

September 2025						
M	T	W	T	F	S	S
1	2	3	4	5	6	7
8	9	10	11	12	13	14
15	16	17	18	19	20	21
22	23	24	25	26	27	28
29	30					

October 2025						
M	T	W	T	F	S	S
		1	2	3	4	5
6	7	8	9	10	11	12
13	14	15	16	17	18	19
20	21	22	23	24	25	26
27	28	29	30	31		

November 2025						
M	T	W	T	F	S	S
					1	2
3	4	5	6	7	8	9
10	11	12	13	14	15	16
17	18	19	20	21	22	23
24	25	26	27	28	29	30

December 2025						
M	T	W	T	F	S	S
1	2	3	4	5	6	7
8	9	10	11	12	13	14
15	16	17	18	19	20	21
22	23	24	25	26	27	28
29	30	31				

January 2026						
M	T	W	T	F	S	S
			1	2	3	4
5	6	7	8	9	10	11
12	13	14	15	16	17	18
19	20	21	22	23	24	25
26	27	28	29	30	31	

February 2026						
M	T	W	T	F	S	S
						1
2	3	4	5	6	7	8
9	10	11	12	13	14	15
16	17	18	19	20	21	22
23	24	25	26	27	28	

March 2026						
M	T	W	T	F	S	S
						1
2	3	4	5	6	7	8
9	10	11	12	13	14	15
16	17	18	19	20	21	22
23	24	25	26	27	28	29
30	31					

April 2026						
M	T	W	T	F	S	S
		1	2	3	4	5
6	7	8	9	10	11	12
13	14	15	16	17	18	19
20	21	22	23	24	25	26
27	28	29	30			

May 2026						
M	T	W	T	F	S	S
				1	2	3
4	5	6	7	8	9	10
11	12	13	14	15	16	17
18	19	20	21	22	23	24
25	26	27	28	29	30	31

June 2026						
M	T	W	T	F	S	S
1	2	3	4	5	6	7
8	9	10	11	12	13	14
15	16	17	18	19	20	21
22	23	24	25	26	27	28
29	30					

July 2026						
M	T	W	T	F	S	S
		1	2	3	4	5
6	7	8	9	10	11	12
13	14	15	16	17	18	19
20	21	22	23	24	25	26
27	28	29	30	31		

August 2026						
M	T	W	T	F	S	S
					1	2
3	4	5	6	7	8	9
10	11	12	13	14	15	16
17	18	19	20	21	22	23
24	25	26	27	28	29	30
31						

Key : White dates - schools open to pupils
 Yellow dates - pupil holiday
 Red dates - bank holiday

Five staff training days will be selected from yellow dates, we suggest 1st & 2nd September, 5th January, 13th April and 20th July. Some may choose to use twilight hours for staff training instead of some or all of these.